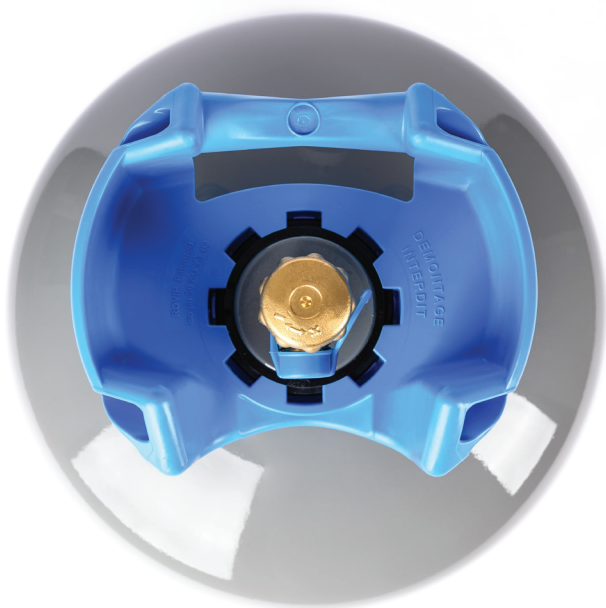


Protecteur Sixela clipsé *Clip Sixela guard*

Système mono bague clipsé universel pour toutes les hauteurs de cols de bouteille
Universal mono ring clip system for all the heights of the cylinder necks

- **Montage sur toutes les hauteurs de cols de bouteille**
Assembly on all the heights of cylinder necks
- **Conformité norme EN 11 117**
Standard compliance EN 11 117
- **Recyclable**
Recyclable
- **Customisable (marque, logo, couleur)**
Customizable (brand, logo, colour)

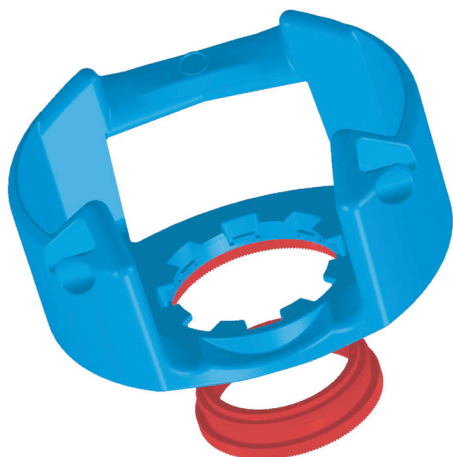


Spécifications / Specifications

Poids / Weight	329 g
∅ pas de vis / Screw ∅	66/68 mm
Matière / Raw material	PE
Couple de serrage / Breaking torque	90 Nm
Résistance à l'arrachement / Pullout resistance	400 Kg

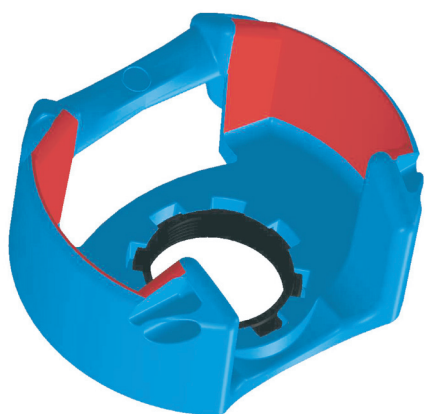
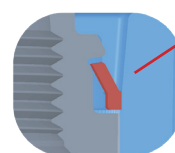
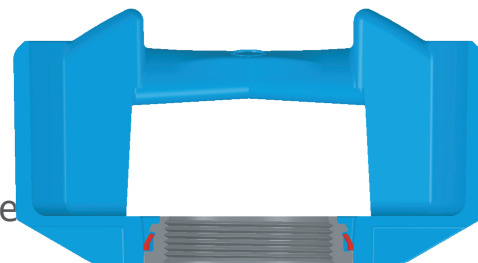
Possibilité d'intégrer des adjuvants, anti-uv et/ou antistatiques. Coloris sur demande.
Ability to integrate additives, anti-uv and/or anti-staticism. Colors on request.

Fonctionnalités Features



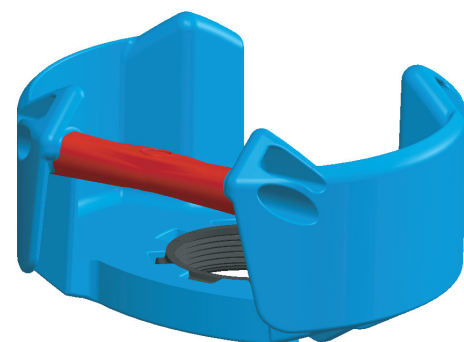
Système mono bague clipsé
Mono ring clip system

Système de clip de retenue
Restraint clip system

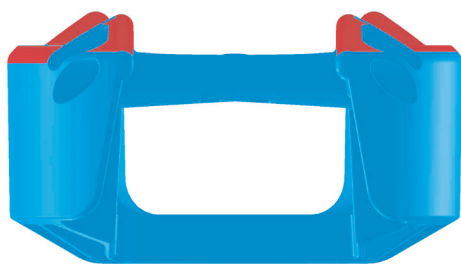


Capsulage automatique
Automatic capping

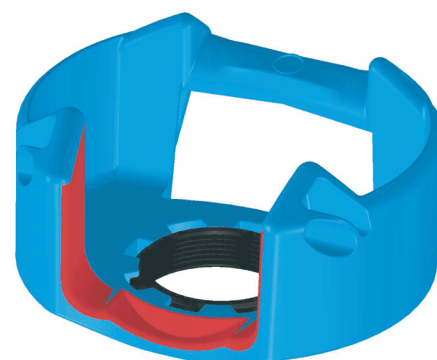
Poignée ergonomique
Ergonomic handle



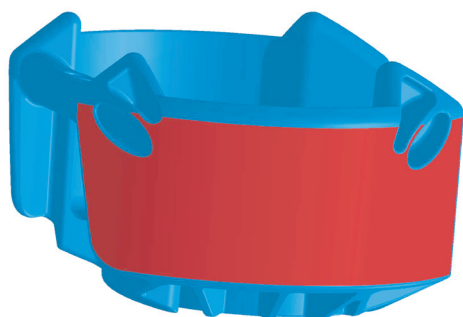
Passage dans les casiers
Casing crossing



Emplissage facilité
Easy filling



Zone de marquage
Marking area



contact@hyleance.com

www.hyleance.com

